

THE RAMBLER

SWOPE PARK MASONIC TEMPLE

2704 EAST LINWOOD BLVD.

SWOPE PARK LODGE # 617



JUNE 1964

SWOPE PARK LODGE
#617 A.F. & A.M.
2704 LINWOOD BLVD.
KANSAS CITY, MO.
ZIP CODE 64128

Non-profit Organization
U.S. POSTAGE
PAID
Kansas City 28, Mo.
Permit #3979

Harold W. Baker
5233 Myrtle
Kansas City 30, Mo.



THE MASTER'S WORD

Behold, how good and how pleasant it is
for brethren to dwell together in unity.

Robert B. Nickell

Worshipful Master

IMPORTANT

Brethren:

Time has come to say good-bye to 2704 Linwood as the address for Swope Park Lodge. For some time now it has been said that 3501 would be our address, that is 3501 Oldham Road, so now it will be a reality! We have a contract signed to sell our present Temple, proceeds of which will be applied to our new one. Plans are to finish the basement with suitable Lodge facilities and move to our new location around the first of September. We had hoped money would be available to complete the upper shell before moving. However sale of our present Temple preceeded our finance committee's assets and so our building association decided this at least would continue at the rate of income. Elsewhere in this news is a letter sent to all the out of town members. We need your support brethren so please read it! We are one of the progressive lodges in this city, so let us keep it that way.

DEAR BROTHER:

We are planning a campaign during the Spring and Summer of 1964 to ask every member of Swope Park Lodge to help complete our new Temple this Fall. Your contributions and pledges are needed NOW!

We have erected the basement walls at 8501 Oldham Road. We have paid for the lot and the construction work to date. We need approximately \$50,000.00 more to complete the Temple.

Enclosed you will find a payment book and a pledge card to be used in this manner:

Cash contributions: Fill out the pledge card, attach your check and mail to J. Kohler Wolfe.

Pledges: Decide the amount you desire to pledge on a monthly, quarterly, semi-annually, or annually on a three yearly basis or any part thereof. Fill out the pledge card along with the payment book. Mail these cards to J. Kohler Wolfe, Treasurer, 9511 Madison, Kansas City, Missouri, 64114. He will record your payment on both and return the payment book to you. Include your book with each check so that you will have an exact duplicate of our records.

Contributions and pledges of any amount will be appreciated. Remember, my Brother, what you give--give freely because the Lord loves a cheerful giver.

Your suggestions for other sources of contributions would be appreciated.

If for any reason you are unable to attend Lodge regularly, we will enjoy hearing from you. Drop a line to L. Verne Hosis, Sec. 2704 Linwood, Kansas City, Missouri, 64128. We are interested in your welfare and prosperity.

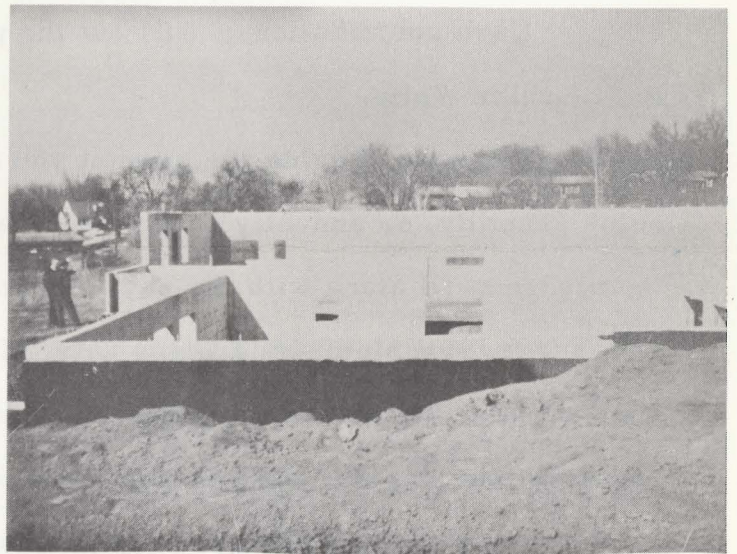
Thanks for your consideration,

Fraternally,

HOLLIS W. LANCASTER
FINANCE COMMITTEE

New Temple
SWOPE PARK LODGE # 617
 WILL BE ERECTED *at this SITE*

Our Family
 - SWOPE PARK LODGE # 617 - R. JOHN WILSON'S
 - Wm. F. Kohn Char. P. M. - PARK CHAR. O. S.
 - SWOPE PARK CHAR. O. S.
 - AGRICULTURE CONCRETE TRUST FUND
 - JOE'S DAUGHTER'S BETHEL # 7



The SWOPE PARK WELFARE AND RELIEF ASSOCIATION has paid \$902.00 in benefits to date proving again that this worthwhile organization is moving ahead. It is surprising how many of you brethren have not as yet taken advantage of this. Make it a point to inquire and learn. George E. Shores is at present the protem secretary and will be glad to make application blanks available to you.

* * * * *

Living in the vicinity of the LOMA VISTA SHOPPING CENTER? Need groceries and supplies which are dispensed with very reasonable prices by people who appreciate your business and are so helpful and pleasant?

BROTHER: GO TO *Rieder's*
FOOD CENTER

We are proud of the many letters we receive from our out of town members and also those from in the city who do not get the opportunity to get to Lodge often. It is evidence of the desire to aid and support the Ramble Club activities and Swope Park Lodge. We do appreciate the letters fellows, so keep them coming!

Ramble Club memberships are due and payable January 1,

You may wish to use the convenient blank below. Please make checks payable to the Ramble Club. Thank you!

NAME

ADDRESS

MY HOBBIES ARE

.....

DATES TO REMEMBER

Swope Park #617 2nd and 4th Thursdays
Wm. F. KUHN Chapter R.A.M. #139 1st and 3rd Tues.
Swope Park Chapter O.E.S. #520 2nd and 4th Tues.
Park Chapter O.E.S. #327 1st and 3rd Fri.
Acacia Conclave, True Kindred 3rd Wed.
Royal Neighbors 4th Thursday Afternoons.
Job's Daughters Bethel #7 1st and 3rd Mondays

These are the regular meetings of the various organizations who meet in the Temple. They earnestly solicit your attendance and support. Come out to the meetings, enjoy YOUR Lodge; be a member instead of just someone on the roster!

DON'T FORGET

Ramble Club Meeting – Second Monday of Each Month. Buck Ram.



LIKE TO BOWL?

Go to King Louie East or West Lanes for an afternoon or evening of enjoyment. No place is more friendly and accommodating as:

KING LOUIE – Kansas City

ON YOUR WAY SOUTH?

STOP AT HUFF'S SERVICE STATION
North 71 Hi-Way – Nevada, Mo.
Harry Pratt Manager.

For building repairing or remodeling
see Roscoe Wilcoxin.
WA 1-6420

HAVE PILL, WILL TRAVEL!

For fast, free delivery service on prescriptions call CL 2-6131 or CL 4-9727 and PETEY CHILDERS will see that your prescriptions are filled correctly and promptly.