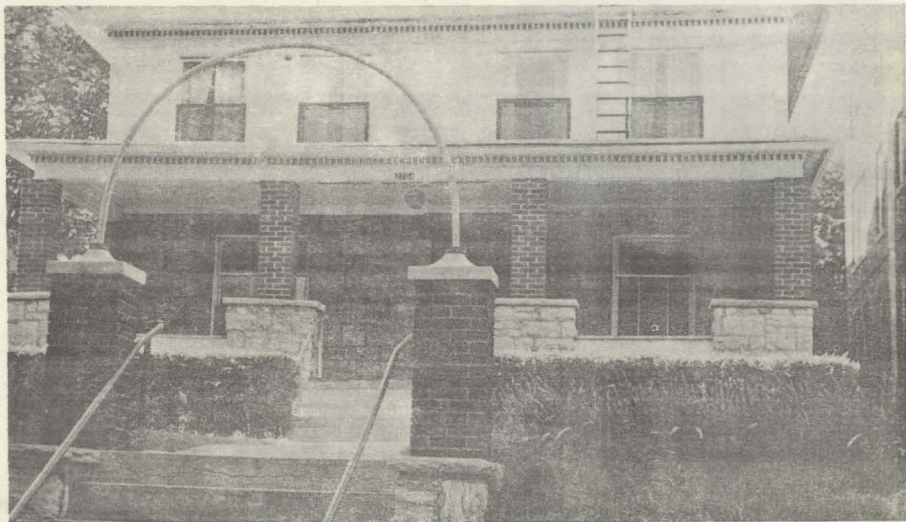


THE RAMBLER

SWOPE PARK MASONIC TEMPLE

2704 EAST LINWOOD BLVD.



AUG 1961

SWOPE PARK LODGE
#617 A.F. & A.M.
2704 LINWOOD BLVD.
KANSAS CITY, MO.

Non-profit Organization
U.S. POSTAGE
PAID
Kansas City 28, Mo.
Permit #3979



AUGUST
SPECIAL
BULLETIN

THE MASTER'S WORD

Brethren:

A dinner commemorating Swope Park Lodge's fifty years of labor is being planned for Saturday, Sept. 30. at Ivanhoe Temple, 3201 Linwood Blvd, at 6:30 P.M. We are to have a special program with a well known guest speaker. A really nice affair is being planned and you will all want to be there. It will however, be a necessity for everyone to make reservations which should be in by Sept. 18th. You will be contacted either by phone or person and we will need many of you to act for us as phone committees and to help the Chairman, Worshipful Bro. Herman Tribue and his committee as much as possible so that we will have a large crowd and a very memorable evening. Wives, children and friends are invited. Dinner, \$2.50 per plate.

FREE GIFT, Valuable porcelain china or sterling for your courtesy in looking at Easterlings lovely Tableware patterns in your own home. Distinctive Gorham Sterling and Stainless flatware, Rosenthal China, Belgian Crystal, Stainless Cookware. Jeanne Mielke, Distributor, De 3-3993.

LIKE TO BOWL?

Go to King Louie East or West Lanes for an afternoon or evening of enjoyment. No place is more friendly and accommodating as:

KING LOUIE
Kansas City

"Time flys why don't you?"

If you are interested in learning to fly or getting additional ratings come out to Olathe City Airport and see Brother Bill Dempsey. If you require any agricultural applications see Brother Cliff Dempsey and don't forget to see Brother Edgar for the best maintenance and aircraft Licensing. Olathe City Airport, 151st and Eureka Road, Olathe, Kansas.

Each death of a member of our Lodge brings about thoughts of our Welfare and Benevolent Association and the necessity for more members. We repeat again that Herman Tribue and James Thomas invite any member of an organization meeting in our Temple to become members. Well worth your time to inquire Brothers and Sisters.

DATES TO REMEMBER

Swope Park #617 2nd and 4th Thursdays
Wm. F. KUHN Chapter R.A.M. #139 1st and 3rd Tues.
Swope Park Chapter O.E.S. #520 2nd and 4th Tues.
Park Chapter O.E.S. #327 1st and 3rd Fri.
Country Club Chapter O.E.S. #448 2nd Fri.
Rainbow Girls Assembly #7 2nd and 4th Wed.
Acacia Conclave, True Kindred 3rd Wed.
Royal Neighbors 4th Thursday Afternoons.

These are the regular meetings of the various organizations who meet in the Temple. They earnestly solicit your attendance and support. Come out to the meetings, enjoy YOUR Lodge; be a member instead of just someone on the roster!

We are proud of the many letters we receive from our out of town members and also those from in the city who do not get the opportunity to get to Lodge often. It is evidence of the desire to aid and support the Ramble Club activities and Swope Park Lodge. We do appreciate the letters fellows, so keep them coming!

Dues for the coming year are payable now. You may wish to use the convenient blank below. Please make checks payable to the Ramble Club. THANK YOU ALL.

NAME

ADDRESS

MY HOBBIES ARE

.....